

# THE BROAD REACH

Volume 11, Number 3, August 1998

A Publication of The Lake Winnepesaukee Sailing Association

## Commodore's Corner

by Susan Sparks

The sign on the main dock at Fay's Boatyard read "Lake Full. No more boats allowed". While the heavy rains of the spring had all the local powerboaters and marina owners upset, the lake became a perfect place to go for a sail. Imagine a Fourth of July weekend without powerboat chop and noise. Well, that is just what we had for the first couple of weekends in July. (For those living under a rock, the water level in the Lake was so high that the speed limit was wake speed - approx. 5 mph.) I think that I saw 3 powerboats on the lake during the entire Jimmy Fund race. Speaking of the Jimmy Fund, results appear elsewhere in this issue.

At a recent LWSA board meeting the discussion turned to fun events and why aren't there any on the schedule. The problem is a lack of volunteers. Dan Saliga (The Lily Pad) and Donna Garland (Haleakala) volunteered to look into some fun events. Anyone who has ideas, suggestions, or would like to help, please contact Dan or Donna.

Labor Day is fast approaching and planning has begun for the Labor Day Regatta. NEW this year - Separate starts and courses for cruising boats and racers and Daily Prizes. More information to follow shortly. We are inviting non-racers and Fay's Boat Yard customers to our Saturday evening barbecue.

We apologize for the schedule error about the WYC Commodore's Cup. There was some confusion on the dates in earlier issues and we are sorry for any problems that the mix up may have caused.

Susan

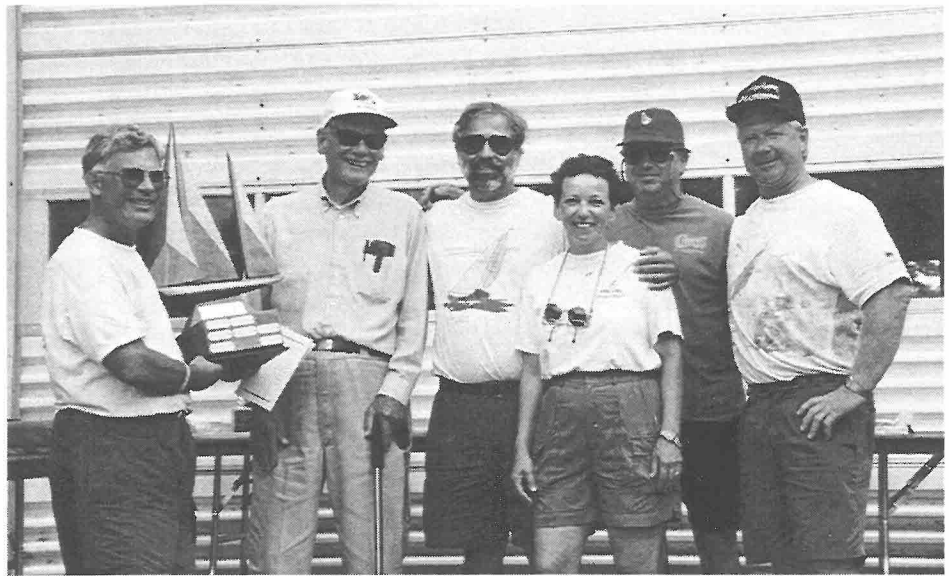


Photo by Dan Saliga

Some of the previous recipients of the Atherton Award present the award to the 1997 honoree, "Parky" Howe at last year's Labor Day Award Ceremony. (Left to Right) Alan Kanegsberg, Parky Howe, Seymour Friedel, Helaine Kanegsberg, Terry Pratt, and Brad Thompson. (Not pictured) Don Sibson, Steve Johnson, Pearl Nydam and Mike Largesse. (See below)

## The Atherton Award

*The Atherton Award was founded by Tom Mullen and its presentation was part of the Grouse Point Regatta. When the LWSA Regatta succeeded that event in 1990, the stewardship of this award was entrusted to the LWSA. Recipients are selected by a committee of the past recipients. The award is not necessarily awarded each year.*

*Tom wrote the following as an explanation of the Award:*

This trophy is awarded in the memory of Ernie Atherton who passed away October 1987 shortly after competing in the First Grouse Point Club Regatta. Those who knew Ernie well and grew to love his special nature and charm, understood the special role that sailing and this wondrous lake played in Ernie's world. Ernie's life on this earth ended abruptly one fall afternoon after he and his wife Janet completed an exciting spinnaker run the length of the lake to Wolfeboro. Ernie died as he lived, with the wind at his back and with peace in his mind.

Ernie's friends here on Lake Winnepesaukee have chosen this award as our special way of keeping his memory alive amongst all of us. It will be awarded this year and in succeeding years to the

Winnepesaukee sailor who best exemplifies the qualities Ernie brought with him to our sport and our treasured lake.

Ernie really enjoyed sailing but was nuts about racing. He was a natural. In a sailboat, Ernie relied on instinct not instruments. When I sailed with Ernie and he said, "Time to tack Tom", I tacked. When he called a lift, I didn't have to look at the instruments or the windex, I knew it was time to head up.

Ernie took good humor and sportsmanship far beyond the level of being positive human traits -- he made these qualities an art form. His humor was quiet, almost dry, and always in good taste. His sportsmanship was marked by its

(Continued on Page 2)

**Lake Winnepesaukee Sailing Association  
& Winnepesaukee Yacht Club  
1998 Tentative Schedule of Sailing Events**

<b>Date</b>	<b>Sponsor</b>	<b>Event</b>	<b>Contact</b>
5/24	LWSA	Michelob Cup Race	T. Pratt
6/6	LWSA	Nite Owl One (evening event)	S. Friedel
6/13-14	LWSA	W.O.O.D. One Design Regatta	E. Philpot
7/5	WYC	Jimmy Fund Regatta	E. Philpot
7/11	LWSA	Nite Owl Two (evening event)	S. Friedel
7/17	WYC	Single Handed Race	E. Philpot
7/18-19	WYC	Commodores Cup	E. Philpot
8/8	LWSA	Nite Owl Three (evening event)	S. Friedel
8/15			
8/22			
8/29			
9/4	LWSA	Frying Pan Race	M. Weisberg
9/5-6	LWSA	Labor Day Regatta	A. Kanegsberg
9/19-20	LWSA	J-Jamboree North	E. Philpot
9/26	LWSA	Pearson, Beneteau, Catalina, J-Cruiser Regatta	M. Weisberg
10/4	WYC	Cold Duck	E. Philpot

**Regular weekly events:**

The following events will be held each week from June 1 through August 28.

<u>Day</u>	<u>Sponsor</u>	<u>Event</u>	<u>Start</u>
Wednesday	LWSA	Laser & Opti Racing	Smith Cove 17:30
Thursday	LWSA	One Design Keelboat Racing	Broads 18:00
Friday	WYC	PHRF Racing	WYC 18:00

**Atherton** (Continued from Page 1)

style and grace. When he won, as he often did, he talked about how well he thought you did, not about how well he had done. Even if you finished last, when you talked with Ernie after the race, he made you feel like a winner.

At last year's Grouse Point Club Regatta, Ernie went into the third race on Sunday with two firsts. He was an easy bet to win his class and perhaps the Overall Trophy. When he inadvertantly committed a rules infraction against another boat, possibly impacting that boat's chance to win, he retired from the race instead of opting to take the alternate penalty and keep racing so the other boat had a chance to do well.

This was no gratuitous, one time act. This was Ernie Atherton's brand of sportsmanship and it was the way he lived his life. Ernie liked seeing other people get ahead

and doing well. He was ecstatic when he was part of the winning team effort, but he kept everyone else's spirits up when the effort fell short. Losing, as long as it was done with class and style, still made you a winner in Ernie's eye.

The winner of the Atherton Award doesn't have to be a boat owner or a racing captain. He or she doesn't have to win races or stand out as a walking encyclopedia of sailing knowledge. The winner must, however, be a sailor on this lake -- a sailor who respects the privilege we all have to enjoy the beauty and sport of the lake like Ernie did. The winner must set an example for other lake sailors to follow whether competing or not. He or she must look like Ernie not in appearance, but in mind and spirit. The Award may not be awarded every year. The winner must stand out like Ernie did, quietly, but distinctly.

*Tom Mullen, 1988*

**Classified Advertising**

Classified ads may be placed up to two weeks prior to publication dates. Cost is \$0.50 per word for members, \$1.00 per word for nonmembers. Make checks payable to LWSA, and remit with ad to Denise Hammond, 750 Cross Country Road, Pembroke, NH 03275.



**LWSA Executive Board**

Susan Sparks, Commodore  
Bob Knowles, Vice Commodore  
Bob Lemaire, Rear Commodore  
Alan Kanegsberg, Treasurer  
Donna Garland, Secretary

**LWSA Committees**

Bob Lemaire, Race Committee  
Susan Sparks, Youth Sailing  
Phil Kanegsberg, Junior Club  
Ed Philpot, One Design  
Alan Kanegsberg, Broad Reach  
Susan Sparks, PHRF

*The Broad Reach* is a publication of the Lake Winnepesaukee Sailing Association (LWSA), PO Box 7047 Gilford, NH 03247. It is circulated to fulfill our non-profit charter which is "...to encourage the sport of sailing." Each issue costs approximately \$250 to produce. If you are receiving these issues as a member, we thank you for your support. If you are not a member, we ask that you consider a tax deductible membership [501(c)(3)] to help us defray publication costs. Thank you.

*The Broad Reach* is published on a monthly basis during the sailing season. All materials for publication are due by the 7th of the month. Publication or use of any material from *The Broad Reach* is not authorized without written permission. Further, *The Broad Reach* and LWSA disclaim responsibility for typographical errors other than the obligation to print a notice of correction.

Submit materials by mail (3.5" disk preferred) to The Editor, 9 Old Coach Road, NH 03304 or Email: akanegsberg@mediaone.net

<u>Size</u>	<u>1 Year</u>	<u>1 Issue</u>
1/2 Page	\$500	\$100
1/3 Page	\$350	\$75
1/6 Page	\$175	\$50

*The Broad Reach* is circulated to more than four hundred Lakes Region sailors and sailing enthusiasts. Commercial support for The LWSA, a non-profit organization, can be acknowledged with space advertising according to the above schedule. To place an advertisement contact the editor: Alan Kanegsberg at 603-225-5635.

---

## Youth Sailing

By Susan Sparks

Have you seen the Lasers? Check out the new paint job on the bottom of all six Lasers. Many thanks to Helaine and Alan Kanegsberg, Meg, Erin, Phil Kanegsberg, Denise Hammond, and Bob Knowles for spending some of their free time to sand, paint, tape, flip, move and reassemble the lasers so that they would be ready for the first day of lessons. Also thanks to Helaine and Alan for loaning us the use of their driveway, garage and back porch as a work area.

Sailing lessons are off to a great start. Meg and Erin are doing a wonderful job with our 2 groups of Level 1 sailors. The morning group is sailed in Optimists and some of the sailors were apprehensive about tipping over, during the capsizing drill most of them were not able to capsize the Optis with both of the kids standing on the leeward rail. This drill made them feel a lot more comfortable about sailing on the boat. The classes also learned how to swim with life jackets and shoes on, since if they do end up in the water

that is what they will be wearing. We would like to thank everyone that showed up to help that first day and also our Parents of the Day for the entire session. Special thanks to Bob Knowles and Ted Ritson for their help with the classes and to Dan Saliga for getting us an emergency cell phone..

**A Reminder:** to parents and volunteers, we require our students to wear life jackets any time they are near the water and we ask that you also set a good example and wear yours when you are assisting with classes or are watching the classes from the dock or on a boat nearby. They don't work if you aren't wearing them.

Thanks to great publicity and great follow-up our Level 1 classes are filled to overflowing this year. Level 2 classes are almost filled and our second level 3 class is full. Meg and Erin will have their hands full. Anyone wishing to be put on the mailing list for lessons next year please drop us a note at the LWSA address Attn: Youth Sailing.

The Pancake Breakfast was held Sunday morning prior to the Jimmy Fund race at the WYC. Thanks to the WYC for allowing us to use their facilities again this year. Those of you that decided the weather wasn't suitable for breakfast missed a great pancake breakfast which goes to a great cause. Thanks to everyone that helped and came and ate the delicious pancakes and sausages.

Wednesday night racing is back in full swing. We encourage any one who would like to race Optimists or Lasers to come out and play. The club boats are available on a first come first available basis in the following order: Sailing club members first, sailing lesson kids second, any LWSA member next. You must be a LWSA member to use the LWSA boats. Anyone who has their own boat can just come out and sail. Anyone that would like to come help out on Wednesday nights please see Phil Kanegsberg. Meg will be available every Wednesday night to give everyone pointers.

---

## 21st Annual Michelob Race

A cloudy and cool but windy day kept the registrations down, but 25 monohulls and 26 multihulls enjoyed a great reverse start race from the southwest tip of Welch Island to Middle Ground Shoal, around Diamond Island, and back to Welch Island.

The crew from New Hampshire Distributors did their usual efficient job of organizing the registration and provided excellent race management. Once again they offered their unique T-Shirts to add to the 20 previous designs. Terry Pratt conducted the Skippers Meeting as Race Chairman and lead us in his rendition of that old favorite "My Boat".

The start was in reverse order (slowest boats first) with the PHRF Handicapped elapsed time for the distance of the course pre-calculated. The theory is that

if everyone sails their boat to its handicap, all boats will finish at the same time.

Obviously, many of us make mistakes in sail choice and trim, crew work, and sailing where there is no wind, so the race comes down to the best performance as it does with any other race.

The winds were 15 to 20 knots from the Northwest which always presents a challenge as the wind accelerates in the area between Belknap Point and Welch Island. Only a few boats elected to fly spinnakers between Welch and Middle Ground Shoals and the second leg was a closer reach. That put everyone in the same situation - both racers and cruisers. The upwind leg was a challenge as the wind steadied at 18 - 20 knots true with the usual waves.

The excitement of a reverse start race comes at the end as faster boats must overtake the slower ones that started before them. The goal is to pass them before reaching the finish. The first four boats to reach the finish were within one minute of each other.

### Results

#### Racing

- 1 J/24 Impatient E. Philpot
- 2 J/24 Good Stuff C. Nickerson
- 3 J/27 Time Bandit A. Kanegsberg

#### Cruising

- 1 J/29 C'est La Vie B. Carroll
- 2 Catalina 34 Haleakala B. Garland
- 3 Scott Free Catalina 27 N. Massie

Net proceeds of the day went to the Youth Sailing School thanks to Michelob and New Hampshire Distributors.

---

## Notice of Race WYC Friday Night Series

### Friday Nights from May 29 through August 28

**Invitation:** The Winnepesaukee Yacht Club is pleased to invite all sailors to the 1998 Friday Night Series.

**Eligibility:** The regatta is open to any skipper or owner who wishes to participate. Participants must meet all regatta requirements and must have paid all event fees before becoming official competitors. There will be a NOVICE Class.

**Rules:** This regatta will be governed by the 1997-2000 *Racing Rules of Sailing* (RROS) including US Sailing Prescriptions, this notice (except as modified by the Sailing Instructions), and the Sailing Instructions.

**Scoring:** The Low Point Scoring System (Appendix A2) will be used.

**Entry:** Each entry must be submitted on the form for the race (may be obtained at sign up or by calling Ed Philpot at 603-528-2900). The entry fee for a single evening is \$5 by cash or check payable to the Winnepesaukee Yacht Club (WYC). Pay at the start line.

**Site:** The races will be buoy and island races and will take place in either of the following locations:

- A. The area known as "The Broads"
- B. the area known as "Sanders Bay"

**Contact:**

Ed Philpot, Regatta Chair  
603-528-2900

**Prizes:** Prizes will be awarded to the top three finishers in each class.

**Social:** A cookout and awards ceremony will be held at the WYC immediately following each race.

**Schedule Each Friday Night:**

1700 Registration at WYC  
(also pay and race at the start line)  
1800 Warning Signal

**SPECIAL NOTE:**

**This ongoing series has many options to encourage participation. It will be fun and there will be a Novice Class. Please contact Ed Philpot 603-528-2900 for additional information.**

## Notice of Race Cold Duck Race

Sunday, October 4, 1998

**Invitation:** The Winnepesaukee Yacht Club is pleased to invite all sailors to the Annual Cold Duck Race.

**Eligibility:** The race is open to all types of sailboats over 20' that have PHRF ratings.

**Rules:** This regatta will be governed by the 1997-2000 *Racing Rules of Sailing* (RROS) including US Sailing Prescriptions, this notice (except as modified by the Sailing Instructions), and the Sailing Instructions.

**Classes:** Spinnaker and Cruising

**Scoring:** The Low Point Scoring System (Appendix A2) will be used.

**Entry:** The entry fee is \$25 (\$20 for USSA Members) by cash or check payable to the WYC.

**Site:** Racing will take place around islands on Lake Winnepesaukee

**Prizes:** Prizes will be awarded to the top 3 finishers in each class plus the Rum Keg and the Cold Duck.

**Social:** At the WYC after the race

**Schedule:** Sunday, October 4  
0930 Registration at WYC  
1000 Skippers' Meeting  
1200 Warning Signal

**Contact:** Ed Philpot  
603-528-2900

## Notice of Race

### Fay's Pearson, Benateau J-Cruisers Cup Saturday, September 26, 1998

**Invitation:** The LWSA is pleased to invite all sailors to the Fay's Boat Yard Annual Pearson, Benateau, J-Cruisers Race.

**Eligibility:** The race is open to the named brands of sailboats over 20' that have PHRF ratings.

**Rules:** This regatta will be governed by the 1997-2000 *Racing Rules of Sailing* (RROS) including US Sailing Prescriptions, this notice (except as modified by the Sailing Instructions), and the Sailing Instructions.

**Classes:** Three Cruising Classes by Manufacturer

**Scoring:** The Low Point Scoring System (Appendix A2) will be used.

**Entry:** The entry fee is \$15 (\$10 for USSA Members) by cash or check payable to the LWSA.

**Site:** Racing will take place around islands on Lake Winnepesaukee. The course will be announced at the Skippers' Meeting.

**Prizes:** Prizes will be awarded to the top 3 finishers in each class plus a free haulout for the first place overall.

**Awards:** After the race in the Fay's Rec Room. Please bring munchies.

**Schedule:** Saturday September 26  
1000 Registration & Meeting at Fay's  
1200 Warning Signal

**Contact:** Mike Weisberg 603-293-8000

# 1998 Ocean Spray Laser U.S. Nationals

By Meghan Heckman

Take one hundred and thirty Lasers, thirty-five knots of wind, six foot seas, three mile beats, and a lightening storm - that is what I experienced the weekend of June 27th.

On Thursday night I packed up my bright yellow Laser and all my gear and headed of to Oysterville, Massachusetts to participate in the 1998 US Laser Nationals. When I arrived at the Wianno Yacht Club four hours later, I was greeted by lawns and parking lots packed with Laser hulls, trailers, dollies, tents, and vans. There were sailors from all over the world representing the US, Canada, France, Australia, England, and several South American countries. The US Sailing Team had several men in the fleet embarking on campaigns for the 2000 Olympic Games in Australia. Brad Dellenbaug

was the head of the Race Committee. This was the BIG TIME.

It blew like stink all three days and two races were held each day except for Friday. That day the first race was called off because of lightening, hail, and ten foot swells. When lighteneing struck the water near the fleet, everyone turtled their boats immediately. While lying prone on the bottom of my turtled Laser with lightening striking the water 50 feet away wasn't my idea of a good time, the reach back to the starting area was the most extreme sailing experience I have ever had.

Saturday's weather was slightly better and the wind was a steady thirty to thirty-five knots with some horizontal rain in the afternoon. Sunday was sunny, windy, and perfect.

I learned a lot during my three days at the Nationals about long courses, ocean sailing, and big fleets. I also have a new respect for Mother Nature, my quadricep and abdominal muscles, and myself.

## Support the Youth Sailing School

Find us some great, non-sailing auction items for our Labor Day Auction. It will only have a few items, so they have to be really good.

Call Bob Knowles at 279-8405

## 1998 LWSA Membership Registration

Name: \_\_\_\_\_

Street: \_\_\_\_\_

City: \_\_\_\_\_ State: \_\_\_\_\_ Zip: \_\_\_\_\_

Home Phone: \_\_\_\_\_ Work Phone: \_\_\_\_\_ Lake Phone: \_\_\_\_\_

Boat Make and Length: \_\_\_\_\_ Boat Name: \_\_\_\_\_

E-Mail Address: \_\_\_\_\_



## US Sailing Association Membership Registration



Please process my USSA Membership for 1998 at a rate of \$35, (instead of the regular rate of \$40). I understand that if I am a member of USSA that I will receive a discount of \$5.00 or 10% of each racing registration fee to cover the cost of insurance through USSA. This will provide full USSA Membership including a Rule Book, a subscription to *Sailing World Magazine* and all other membership benefits.

I/we are enclosing the following:

- \$ \_\_\_\_\_ for LWSA Family Membership Dues \$75
- \$ \_\_\_\_\_ for LWSA Individual Membership Dues \$38
- \$ \_\_\_\_\_ for LWSA Junior Membership Dues (Wed Night Racing) 18 & under \$20
- \$ \_\_\_\_\_ for US Sailing Association Dues \$35

TOTAL \$ \_\_\_\_\_ Signed: \_\_\_\_\_ Date: \_\_\_\_\_

Mail to: Lake Winnepesaukee Sailing Association, PO Box 7047, Gilford, NH 03247

===== Jimmy Fund =====  
 Event Standings

Racing A

Yacht	Skipper	R#1	Points	Place
=====	=====	===	=====	===
COHERENT	Sibson	1	0.75	1
TIME BANDIT	Kanegsberg	2	2.00	2
HOT TUB	Thompson	3	3.00	3
PINOCCHIO	Knowles	4	4.00	4
MAIL-ORDER BRIDE	Pratt	5	5.00	5
SHAMROCK III	Mullen	6	6.00	6
20/20	Friedel	8	8.00	7

Racing B

Yacht	Skipper	R#1	Points	Place
=====	=====	===	=====	===
FINISHING TOUCH	Egan	1	0.75	1
LEADING INDICATOR	Thibeault	2	2.00	2
GOOD STUFF	Nickerson	3	3.00	3
JADE	McMann	4	4.00	4
HIGHT SPIRITS	Echel	5	5.00	5
JANE E	Smith	6	6.00	6
AIR EXPRESS	Boucher	7	7.00	7
IMPATIENT	Philpot	10	10.00	8
TENACIOUS	Lanza	10	10.00	8

Cruising A

Yacht	Skipper	R#1	Points	Place
=====	=====	===	=====	===
TOTAM	Selig	1	0.75	1
C'EST LA VIE	Carroll	2	2.00	2
HALEAKALA	Garland	3	3.00	3
NIGHT FLY	Penny	4	4.00	4
SEASCAPE	Weiner	5	5.00	5

Cruising B

Yacht	Skipper	R#1	Points	Place
=====	=====	===	=====	===
WILDFLOWER	Fuller	1	0.75	1
SCOT-FREE	Massie	2	2.00	2
A LITTLE DANGEROUS	Weisberg	3	3.00	3
SERENITY	Richardson	4	4.00	4

===== Commodores Cup =====  
 Event Standings

Racing A

Yacht	Skipper	R#1	R#2	R#3	Points	Place
=====	=====	===	===	===	=====	===
MAIL-ORDER BRIDE	Pratt	1	1	1	3.00	1
COHERENT	Sibson	2	3	2	7.00	2
PINOCCHIO	Knowles	3	2	3	8.00	3
HOT TUB	Thompson	5	5	4	14.00	4
SHAMROCK III	Mullen	4	4	8	16.00	5
KING HIGH	King	7	6	5	18.00	6
SEA ELLEN	Pratt	6	8	8	22.00	7

Racing B

Yacht	Skipper	R#1	R#2	R#3	Points	Place
=====	=====	===	===	===	=====	===
LEADING INDICATOR	Thibeault	1	1	1	3.00	1
INSIDE EDGE	Nix	3	3	2	8.00	2
ANTICIPATION	Parsons	4	4	5	13.00	3
CLASSY LADY	MacQuarrie	8	2	4	14.00	4
FLYING COLORS	Curtis	2	8	6	16.00	5
WASTED YOUTH	Heckman	6	7	3	16.00	6
FINISHING TOUCH	Egan	5	5	7	17.00	7
AIR EXPRESS	Boucher	7	6	8	21.00	8

Cruising A

Yacht	Skipper	R#1	R#2	R#3	Points	Place
=====	=====	===	===	===	=====	===
20/20	Friedel	1	1	1	3.00	1
TOTAM	Selig	2	2	2	6.00	2
HALEAKALA	Garland	3	3	3	9.00	3

Cruising B

Yacht	Skipper	R#1	R#2	R#3	Points	Place
=====	=====	===	===	===	=====	===
SCOT-FREE	Massie	1	1	1	3.00	1
THE LILY PAD	Saliga	2	2	2	6.00	2



LAKE WINNIPESAUKEE

**SAILING ASSOCIATION**

P.O. Box 7047  
Gilford, NH 03247-7047

**August 1998**

Postmaster: RETURN SERVICE REQUESTED

# **9th Annual Labor Day Regatta**

**Sponsored by Heineken Beer and Fay's Boat Yard**

**Friday, Saturday, and Sunday  
September 4, 5, and 6 1998**

**Notice of Race will be mailed Separately  
(call 603-225-5635 if you need one)**

**If you are not racing  
Join us for a barbecue**

**Saturday Evening, September 5 at Fay's Boat Yard Rack Storage Building**

Tickets must be purchased in advance by calling 603-225-5635 or from the Chandlery at Fay's